

**APOF Antibody (Center)**  
**Affinity Purified Rabbit Polyclonal Antibody (Pab)**  
**Catalog # AP10107c****Specification**

---

**APOF Antibody (Center) - Product Information**

Application	IHC-P, WB,E
Primary Accession	<a href="#">Q13790</a>
Other Accession	<a href="#">NP_001629.1</a>
Reactivity	Human
Host	Rabbit
Clonality	Polyclonal
Isotype	Rabbit IgG
Calculated MW	35399
Antigen Region	111-138

**APOF Antibody (Center) - Additional Information****Gene ID** 319**Other Names**

Apolipoprotein F, Apo-F, Lipid transfer inhibitor protein, LTIP, APOF

**Target/Specificity**

This APOF antibody is generated from rabbits immunized with a KLH conjugated synthetic peptide between 111-138 amino acids from the Central region of human APOF.

**Dilution**

IHC-P~~1:10~50

WB~~1:1000

E~~Use at an assay dependent concentration.

**Format**

Purified polyclonal antibody supplied in PBS with 0.09% (W/V) sodium azide. This antibody is purified through a protein A column, followed by peptide affinity purification.

**Storage**

Maintain refrigerated at 2-8°C for up to 2 weeks. For long term storage store at -20°C in small aliquots to prevent freeze-thaw cycles.

**Precautions**

APOF Antibody (Center) is for research use only and not for use in diagnostic or therapeutic procedures.

**APOF Antibody (Center) - Protein Information****Name** APOF

**Function** Minor apolipoprotein that associates with LDL. Inhibits cholesteryl ester transfer protein (CETP) activity and appears to be an important regulator of cholesterol transport. Also associates to a lesser degree with VLDL, Apo-AI and Apo-AII.

**Cellular Location**

Secreted

**Tissue Location**

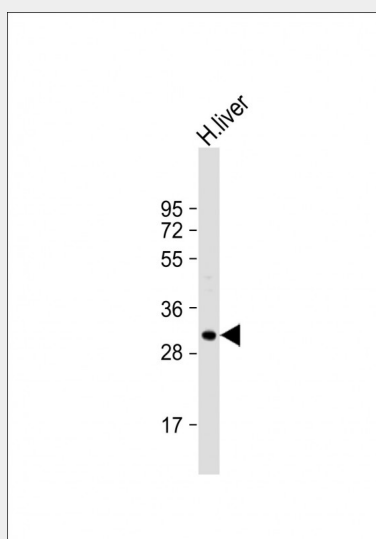
Expressed by the liver and secreted in plasma.

**APOF Antibody (Center) - Protocols**

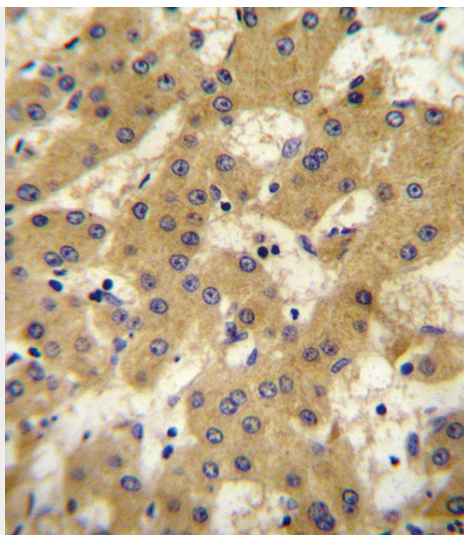
Provided below are standard protocols that you may find useful for product applications.

- [Western Blot](#)
- [Blocking Peptides](#)
- [Dot Blot](#)
- [Immunohistochemistry](#)
- [Immunofluorescence](#)
- [Immunoprecipitation](#)
- [Flow Cytometry](#)
- [Cell Culture](#)

**APOF Antibody (Center) - Images**



Anti-APOF Antibody (Center) at 1:1000 dilution + human liver lysate Lysates/proteins at 20 µg per lane. Secondary Goat Anti-Rabbit IgG, (H+L), Peroxidase conjugated at 1/10000 dilution. Predicted band size : 35 kDa Blocking/Dilution buffer: 5% NFDM/TBST.



APOF antibody (Center) (Cat. #AP10107c) immunohistochemistry analysis in formalin fixed and paraffin embedded human hepatocarcinoma followed by peroxidase conjugation of the secondary antibody and DAB staining. This data demonstrates the use of the APOF antibody (Center) for immunohistochemistry. Clinical relevance has not been evaluated.

#### **APOF Antibody (Center) - Background**

The product of this gene is one of the minor apolipoproteins found in plasma. This protein forms complexes with lipoproteins and may be involved in transport and/or esterification of cholesterol.

#### **APOF Antibody (Center) - References**

Ruano, G., et al. Pharmacogenomics 11(7):959-971(2010)  
Mosbruger, T.L., et al. J. Infect. Dis. 201(9):1371-1380(2010)  
Chen, S.N., et al. BMC Med. Genet. 10, 111 (2009) :  
He, Y., et al. J. Lipid Res. 49(7):1529-1537(2008)  
Morton, R.E., et al. J. Lipid Res. 49(1):127-135(2008)